



# Operating Manual

## Parts List

Model no.:	
Serial no.:	
Purchased From:	
Date	

### Hand Pallet Trucks:

***GLIDE X-6000 & W-5000***



### **⚠ WARNING**

Operator **MUST** read and understand all assembly and operating instructions before using this Hand Pallet Truck.

### **Limited Warranty**

CARBO USA LLC (Here in as "We" or "Us") warrants to the original purchaser only (Here in as "You" or "Your") that CARBO GLIDE product brand purchased will be free from material defects in both materials and workmanship, normal wear and tear are excepted, for a period of one year from the date of purchase. The warranty is valid only if the installation and use of the product is done so strictly in accordance with product instructions and from a professional user. There are no other warranties, express or implied, including the warranty of merchantability or fitness for a particular purpose. If the product does not comply with this limited warranty, your sole and exclusive remedy is that We will, at our discretion and within a commercially reasonable time, either replace the product or product component without charge to You or refund the purchase price (excluding shipping costs).

This limited warranty is not transferable.

### **Obligations of Purchaser**

You must retain Your product purchase receipt to verify date of purchase and confirm that You are the original purchaser. To initiate a warranty claim, contact Us at (972)803-4040, identify the product by make, serial and model number, and follow the claim instructions that will be provided. The product and the purchase receipt must be provided to Us in order to process Your warranty claim. Any returned product that is replaced or refunded by Us becomes our property. You will be responsible for return shipping costs or costs related to Your return visit to a retail store.

### **Limitations on the Warranty**

This limited warranty does not cover: (1) normal wear and tear; (2) damage from, overloading, misapplication or improper installation; (3) damage through, neglect, misuse abuse, or as a result of any accident or in any other manner; (4) improper repair and maintenance; and (5) product alteration in any manner by anyone other than Us, with the sole exception of alterations made pursuant to product instructions and in a workmanlike manner.

### **Assumption of Risk**

You acknowledge and agree that any use of the product for any purpose other than the specified use(s) stated in the product instructions is at Your own risk.

### **Remedy Limits**

Product replacement or a refund of the purchase price is Your sole remedy under this limited warranty or any other warranty related to the product. We shall not be liable for: service or labor charges or damage to Your property incurred in removing or replacing the product; any damages, including, without limitation, damages to tangible personal property or personal injury, related to Your improper use, installation, or maintenance of the product or product component; or any indirect, incidental or consequential damages of any kind for any reason.

For more Information please contact your local CARBO USA products distributor or direct at the phone and address listed here:

CARBO USA LLC

2636 Walnut Hill In, #230, Dallas, TX 75229

Telephone: (972)803-4040

### **Governing Law**

This limited warranty gives You specific legal rights, and You also may have other rights which vary from state to state. Some states do not allow limitations or exclusions on implied warranties or incidental or consequential damages, so the above limitations may not apply to You. This limited warranty is governed by the laws of the State of Texas, without regard to rules pertaining to conflicts of law. The state courts located in Dallas.



### **IMPORTANT SAFETY INSTRUCTIONS**

1. Read and understand the warnings on the pallet truck and in this manual. Failure to comply with all of these warnings may result in serious injury.
2. Read and understand the entire owner's manual before attempting assembly or operation of the pallet truck.
3. Do not use this pallet truck for anything other than its intended use. If used for other purposes, CARBO USA disclaims any real or implied warranty and holds itself harmless from any injury that may result from that use.
4. Do not operate a loaded pallet truck on uneven surfaces, ramps or inclines.
5. Replace the warning labels if they become damaged or removed.
6. Do not tip load pallet truck forks, this may cause damage to the forks and personal injury.
7. Do not place hands or feet under the pallet truck at any time.
8. Do not move a loaded pallet truck by anything other than manual force.
9. To prevent accidental tipping, make sure load is centered on the forks.
10. Do not load pallet truck beyond its rated capacity.
11. Never leave a loaded pallet truck unattended in the raised position.
12. Always lower load to the floor.
13. Do not operate a pallet truck unless you have evaluated its condition.
14. Secure load before transporting or parking.
15. Do not lift people on the pallet truck.

Thank you for your purchasing of our pallet truck.

This Hand Pallet Truck is designed for horizontal lifting and transport of loads on a pallet or standardized containers on a level, fixed base. For your safety and correct operation, please carefully read this instruction before using it.

**The warnings, cautions, and instructions in this manual cannot cover all possible conditions or situations that could occur. Exercise common sense and caution when using this pallet truck. Always be aware of the environment and ensure that the tool is used in a safe and responsible manner.**

**NOTE:** All of the information reported herein is based on data available at the time of this publication. We reserve the right to modify our own products at any moment without notice and liability in any sanctions. For this reason it is suggested to always verify possible updates and changes.

## 1. GENERAL SPECIFICATIONS

Capacity	(kg)	2000	2000	2500	2500	3000	3000
Maximum. Fork Height (mm)		200 (or 190)					
Minimum. Fork Height (mm)		85 (or 75)					
Fork Length	(mm)	1150	1220	1150	1220	1150	1220
Width Overall Forks	(mm)	450 / 520 / 540 / 685					
Individual Fork Width	(mm)	160					
Load Wheel Diameter	(mm)	Ø 80x70(or Ø 74x70) Nylon, Polyurethane					
Steering Wheel Diameter	(mm)	Ø 200(or Ø 180) Nylon, Polyurethane, Rubber					

Special fork lengths are available in 800, 900, 950, 1000, 1500, 2000mm.

Materials and specifications are subject to change without notice.

## 2. ATTACHING DRAW-BAR TO PUMP UNIT

If you have purchased pallet truck in a wooden box, some assembly is required. You will require the following tools: hammer, pliers, and spanner; and the following parts that are provided in a plastic bag located in the draw-bar: one axle with hole (105), and two elastic pins (106) (**Note one is in the axle (105)**).

**NOTE: The number of draw-bar and pump should be the same.**

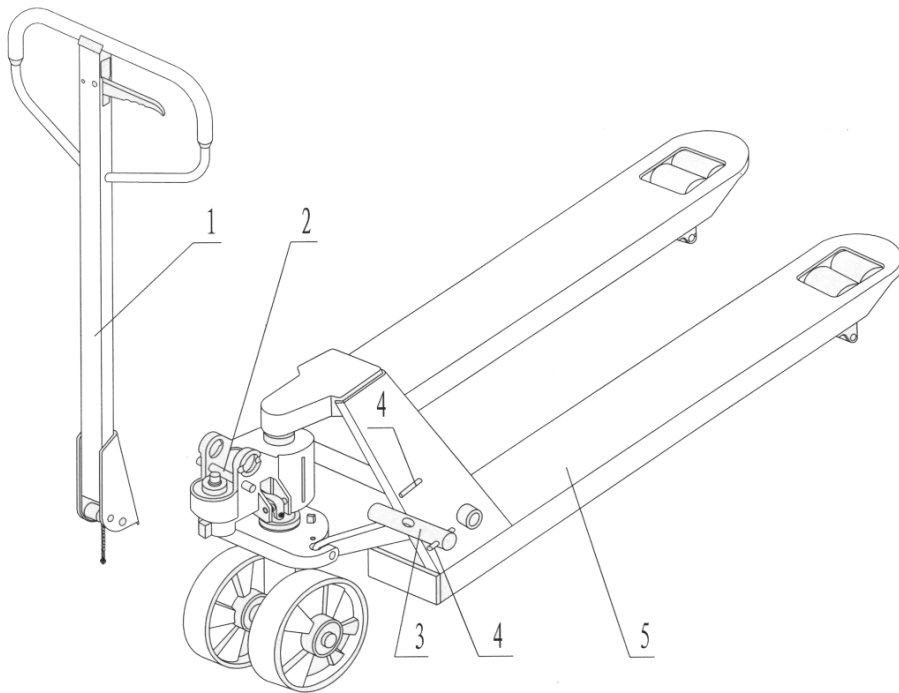


Fig. 1

**1. Draw-bar 2. Pin 3. Axle with hole 4. Elastic pin 5. Fork frame**

When attaching the handle, it is best to stand just behind the pallet truck. Then:

**2.1** Insert the draw-bar onto the pump piston (303), then use a hammer to insert the axle with hole (105) into the hydraulic pump and draw-bar **from right to left**. (See fig. 2).



Fig. 2

**2.2** Set control handle (117 or 120G) to the **'LOWER'** position, then pass the adjusting nut (104), adjusting bolt (103) and chain (102) through the hole of axle (105) (See fig. 3).

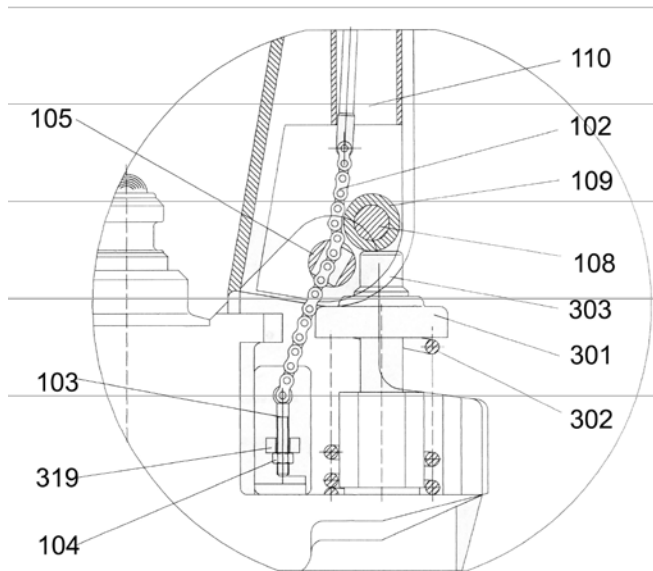


Fig. 3

**2.3** Press the draw-bar (110, 110B or 111G) down, take away the pin (#2) (See Fig. 1).

**2.4** Set the control handle (117 or 120G) on '**RAISE**' position, then raise the lever plate (319) with the pin (#2) and insert the adjusting bolt (103) into the front slot of lever plate (319). Make sure to keep the adjusting nut (104) on the underside of the lever plate.

**2.5** Use a hammer to tap another elastic pin (106) into the axle with hole (105).  
The draw-bar is now connected to the pump.

### 3. ADJUSTING RELEASE DEVICE

On the draw-bar of this pallet truck, you will find the control handle (117 or 120G) that can be set to three different positions:

- Raise**            -handle down
- Drive**            -handle in center position
- Lower**           -handle up, the lever moves back to the drive position when released.

However, if they have been changed, you can adjust by taking to following steps:

- 3.1** If the forks elevate while pumping in the **DRIVE** position, turn the adjusting nut (104) on the adjusting bolt (103) or screw (318) clockwise until pumping action does not raise the forks and the **DRIVE** position functions properly.
- 3.2** If the forks descend while pumping in the **DRIVE** position, turn the nut (104) or screw (318) counter-clockwise until the forks do not lower.
- 3.3** If the forks do not lower when the control handle (117 or 120G) is in the **LOWER** position, turn the nut (104) or screw (318) clockwise until it is possible to lower the forks by raising the control handle (117 or 120G). Then check the **DRIVE** position according to item 3.1 and 3.2 to confirm that the nut (104) and screw (318) are in the proper position.
- 3.4** If the forks do not elevate while pumping in the **RAISE** position, turn the nut (104) or screw (318) counter-clockwise until the forks elevate while pumping in the **RAISE** position. Then check the **LOWER** and **DRIVE** position according to item 3.1, 3.2 and item 3.3.

## **4. MAINTENANCE**

The pallet truck is largely maintenance-free.

### **4.1 OIL**

Please check the oil level every six months. The oil can be hydraulic oil: ISO VG32, its viscosity should be 30cSt at 40<sup>o</sup> C, total volume is about 0.4lt.

### **4.2 ELIMINATING AIR FROM THE OIL**

It is possible that air may enter the hydraulic oil during transportation or because the pump is in the upside down position. This will result in the forks failing to elevate while pumping in the **RAISE** position. The air can be eliminated from the oil by setting the control handle (117 or 120G) to the **LOWER** position, and then moving the draw-bar up and down several times.

### **4.3 DAILY MAINTENANCE**

Daily inspection of the pallet truck is recommended. Special attention should focus on the wheels, axles, threads, rags, etc. The forks should be unloaded and put in the lowest position when the pallet truck is not in use.

#### **4.4 LUBRICATION**

All bearings and shafts are greased at the factory. It is recommended that long-life grease is applied to the lubrication points at monthly intervals or after each time the truck is cleaned thoroughly.

## 5. TROUBLE SHOOTING

NO.	Trouble	Cause	Solution
1	The forks cannot be lifted to the maximum height.	Not enough hydraulic oil.	Add oil to the correct level
2	The forks cannot be lifted up.	No hydraulic oil or the oil has impurities. The nut (104) is too high. Keeping the pumping valve open allows air to enter the hydraulic oil.	Add or change the oil.  Adjust the nut (104) or screw (318) (see item 3.4)  Eliminate air from the oil (see item 4.2)
3	The forks cannot be lowered.	The piston rod (328) or pump (322) is deformed resulting from partial loading slanting to one side or over-loading.  The fork was kept in the high position for an extended period, resulting in the piston rod bared collecting rust or dust that jams the rod. The adjusting nut (104) or screw (318) is not in the correct position.	Replace the piston rod (328) or pump (322).  Ensure the fork is set to the lowest position when not in use, and then lubricate the rod.  Adjust the nut (104) or screw (318) (see item 3.3)
4	Leaks	Sealing parts worn or damaged. Some part cracked or worn.	Replace with a new part. Replace with a new part.
5	The forks lowered without the release valve working.	Impurities in the oil cause the release valve to be unable to properly close. Some parts of hydraulic system are damaged. Air has entered the oil. Sealing parts worn or damaged. The adjusting nut (104) or screw (318) are not in the correct position.	Replace with new oil.  Inspect and replace worn parts.  Eliminate air from the oil. (See item 4.2).  Adjust the nut (104) or screw (318). (See item 3.2)

**NOTE: DO NOT ATTEMPT TO REPAIR THE PALLET TRUCK UNLESS YOU ARE TRAINED AND AUTHORIZED TO DO SO.**

Fig. 4

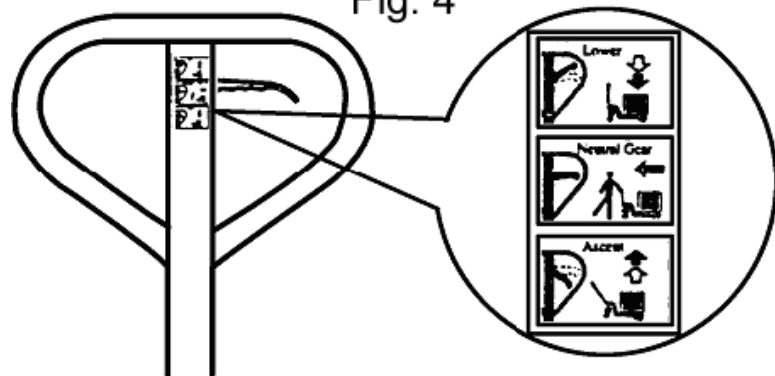
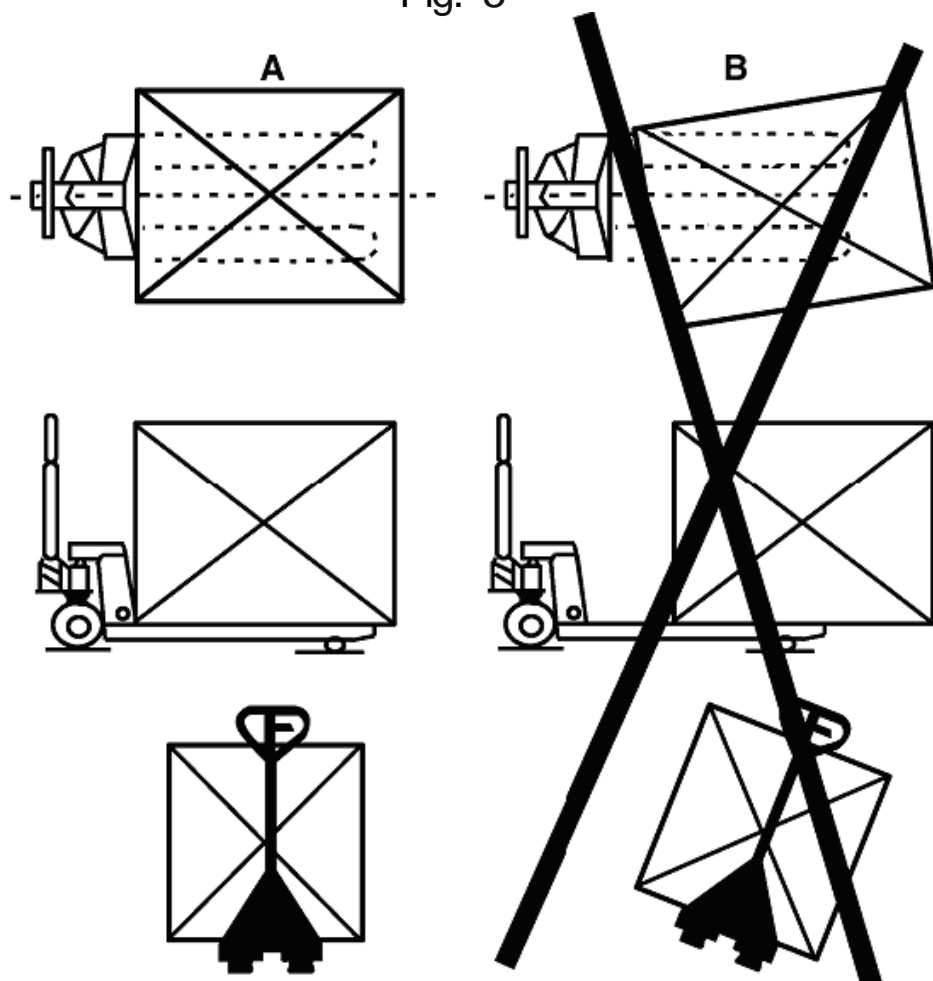
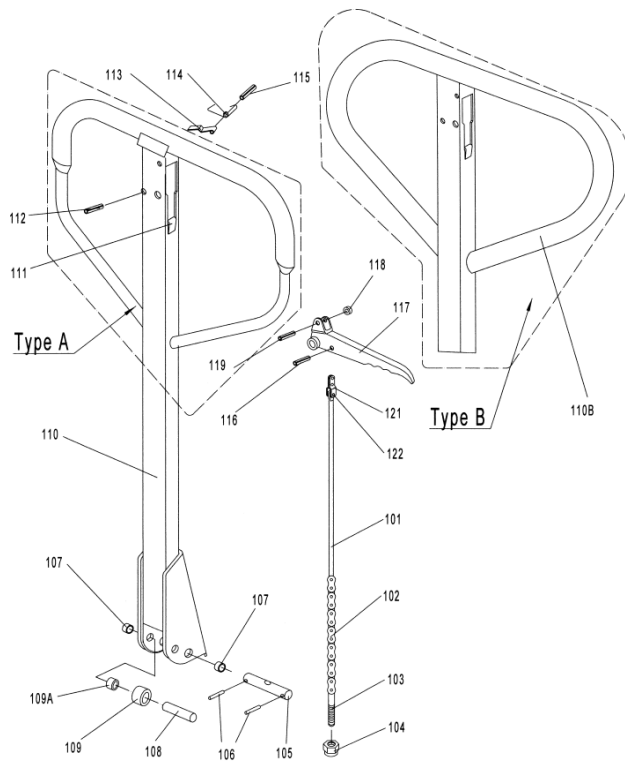


Fig. 5

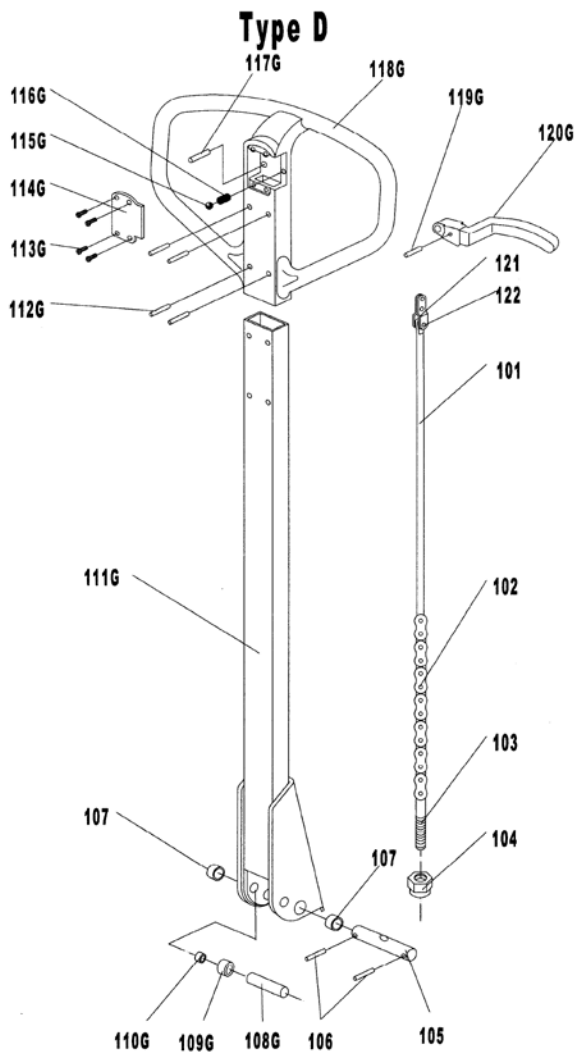




### LIST of DRAW-BAR

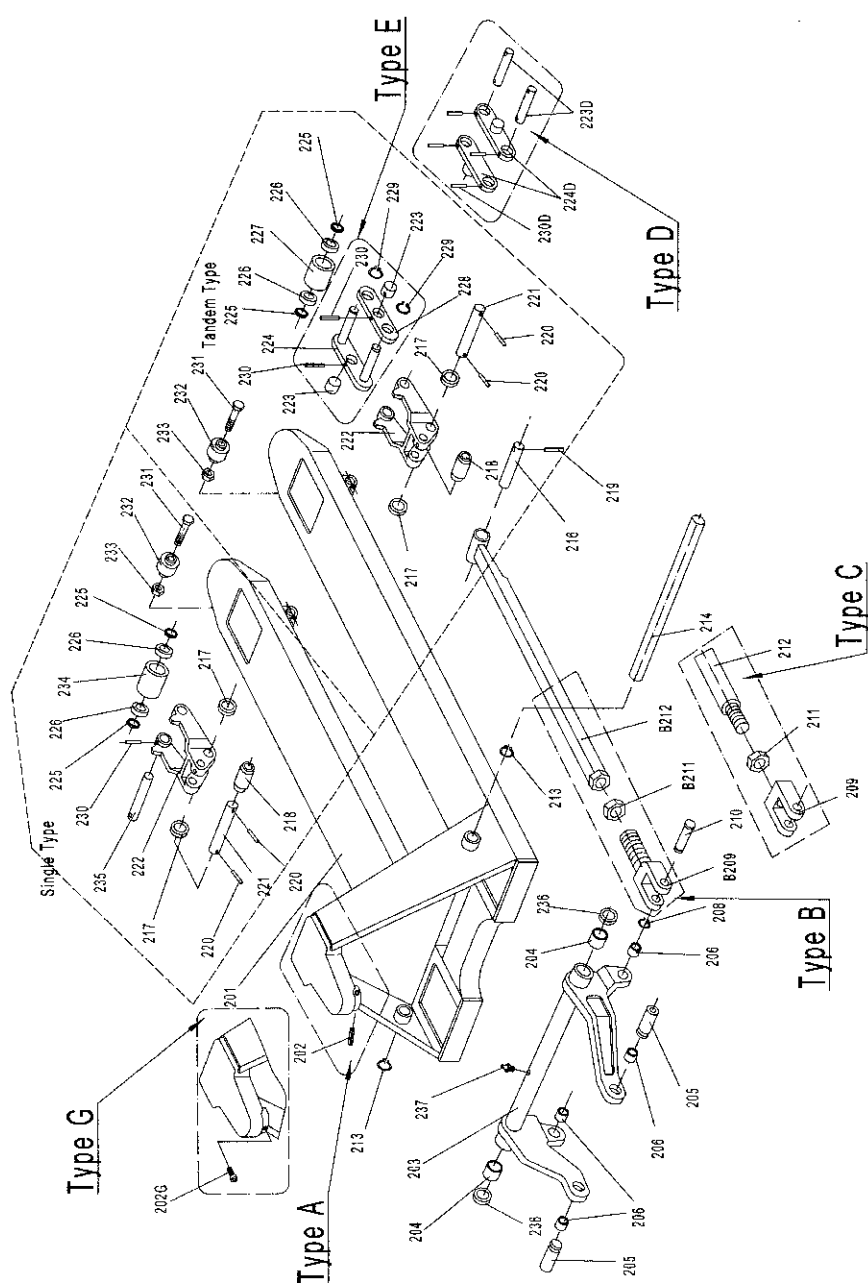
No.	Description	Qty.	Remark
101	Release Rod	1	
102	Chain	1	
103	Adjusting Bolt	1	
104	Adjusting Nut	1	
105	Axle with Hole	1	
106	Elastic Pin	2	
107	Bushing	2	
108	Roller Pin	1	
109	Pressure Roller	1	
109A	Bushing	1	
110	Draw-bar	1	For Type A
110B	Draw-bar	1	For Type B
111	Stop Rubber	1	
112	Elastic Pin	1	
113	Blade Spring	1	

114	Spring	1	
115	Elastic Pin	1	
116	Elastic Pin	1	
117	Control Handle	1	
118	Roller	1	
119	Elastic Pin	1	
120			
121	Pull Board	1	
122	Pin	1	



### LIST OF DRAW-BAR for TYPE D

No.	Description	Qty.	Remark	No.	Description	Qty.	Remark
101	Release Rod	1		113G	Screw	4	For Type D
102	<b>Chain</b>	1		114G	Cover	1	
103	<b>Adjusting Bolt</b>	1		115G	Ball	1	
104	Adjusting Nut	1		116G	Spring	1	
105	Axle with Hole	1		117G	Pin	1	
106	Elastic Pin	2		118G	Handle	1	
107	Bushing	2		119G	Pin	1	
108G	Roller Pin	1	For Type D	120G	Controlling Handle	1	
109G	Pressure Roller	1		121	Pull Board	1	
110G	Bushing	1		122	Pin	1	
111G	Draw - bar	1					
112G	Pin	4					



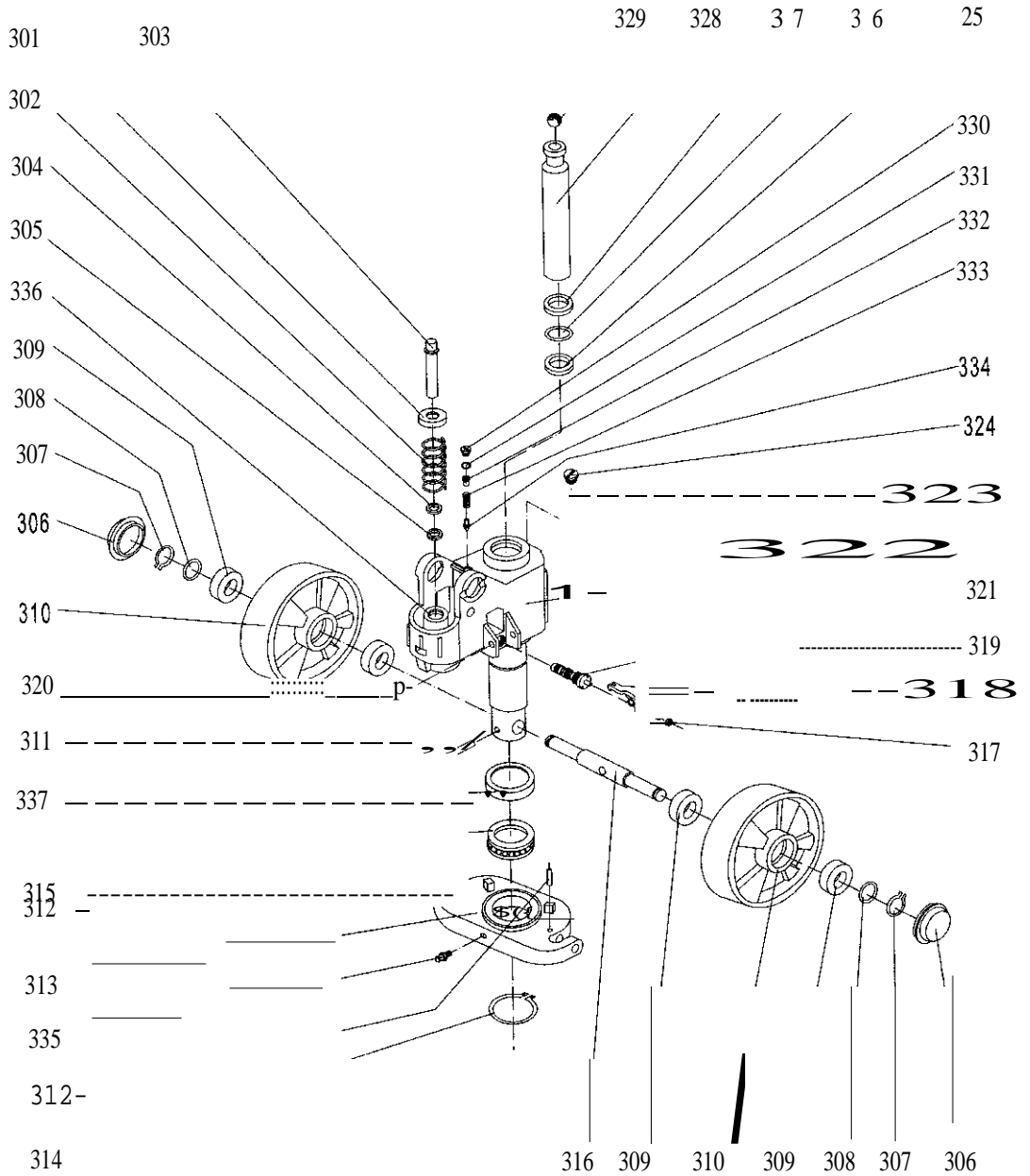
### LIST OF FORK FRAME

No.	Description	Qty.	Remark
201	Fork Frame	1	
202	Elastic Pin	1	For Type A
202G	Bolt	1	For Type G
203	Rock - Arm	1	
204	Bushing	2	
205	Shaft	2	
206	Bushing	2	
207	Bushing	2	
208	Retaining Ring	2	
210	Pin	2	
209	Joint	2	For Type C
211	Nut	2	
212	Pushing Rod	2	
B209	Joint	2	For Type B
B211	Nut	2	
B212	Pushing Rod	2	
213	Retaining Ring	2	
214	Shaft	1	
215	Bushing	4	
216	Shaft	2	
217	Intermediate Roller	4	
218	Extending Roller	2	
219	Elastic Pin	2	
220	Elastic Pin	4	
221	Shaft	2	
222	Frame of Roller	2	
223*	Shaft	4	For Type E
224*	Tandem Mounting with Pin	2	
228*	Tandem Mounting	2	
229*	Spring Washer	4	

230	Elastic Pin	8 or 2	
223D*	Shaft for Roller	4	For Type D
224D*	Linking Plate	4	
230D	Elastic Pin	8 or 2	
225	Washer	8 or 4	
226	Bearing	8 or 4	
227*	Loading Roller	4	
231	Bolt	2	
232	Enter Roller	2	
233	Locking Nut	2	
234#	Loading Roller	2	
235#	Shaft for Roller	2	
236	Washer	2	
237	Grease Cup	1	

**NOTE: \*-- For double wheel; #-- For single wheel**

# Type A Pump



### Type A hydraulic pump

No.	Description	Quantity	Remark
301	Spring Cap	1	
302	Spring	1	
303	Pump Piston	1	
304	Dust Ring	1	
305	Seal	1	
306	Dust Cover	2	
307	Locking Ring	2	
308	Washer	2	
309	Bearing	4	
310	Loading Wheel	2	
311	Elastic Pin	1	
312	Elastic Pin	2	
313	Thrust Plate	1	
314	Retaining Ring	1	
315	Bearing	1	
316	Shaft of loading Wheel	1	
317	Nut	1	
318	Screw	1	
319	Lever Plate	1	
320	Elastic Pin	1	
321	Valve Cartridge	1	
322	Pump Body	1	
323	Seal Washer	1	
324	Screw Plug	1	
325	Seal	1	
326	O – Ring	1	
327	Dust Ring	1	
328	Piston Rod	1	
329	Steel Ball	1	
330	Screw Plug	1	
331	O - Ring	1	
332	Bolt	1	
333	Spring	1	



### Type X hydraulic pump

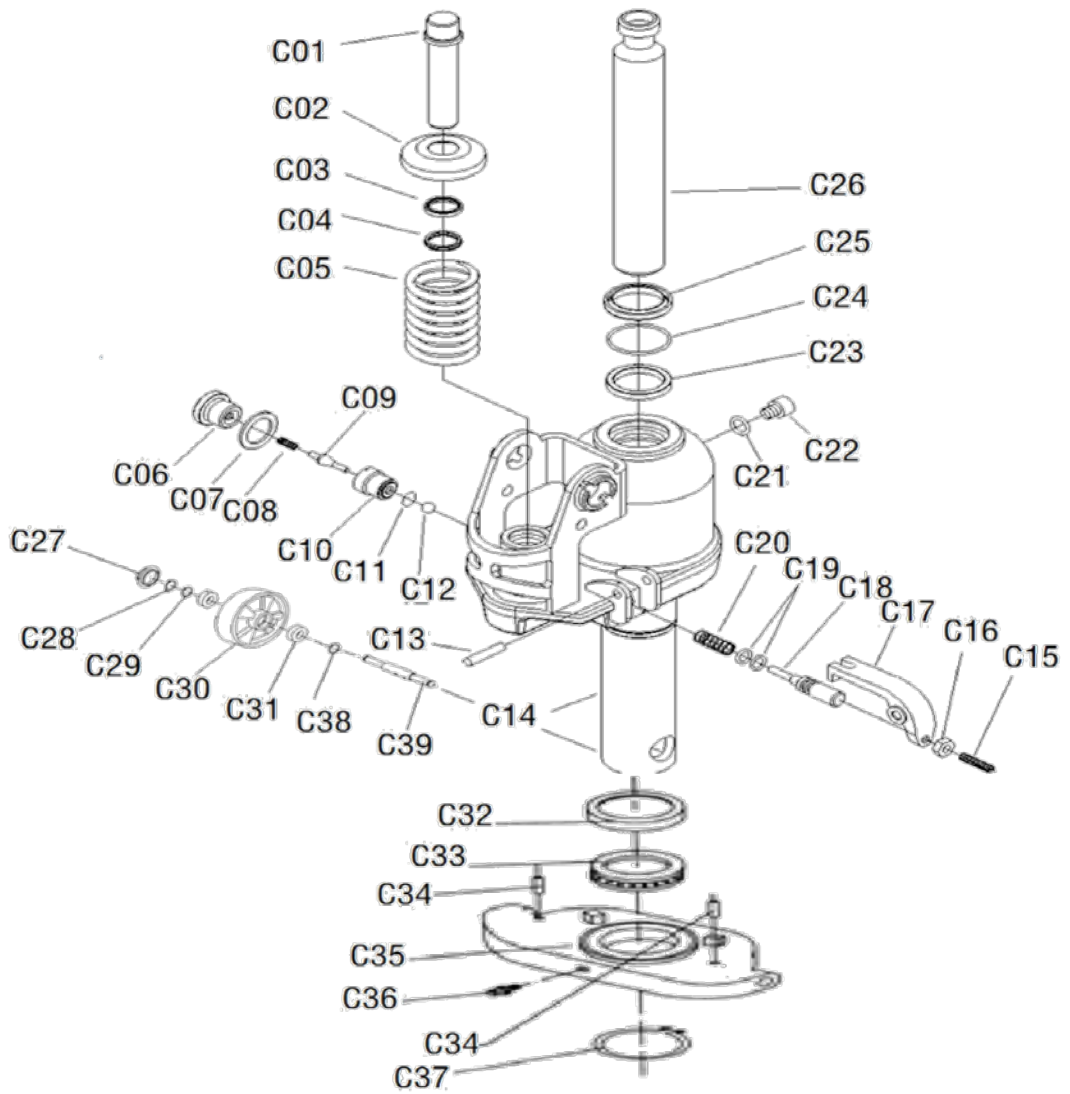
No.	Description	Qty.	Remark
301	Spring Cap	1	
302	Spring	1	
303	Pump Piston	1	
304	Dust Ring	1	
305	Seal	1	
306	Dust Cover	2	
307	Locking Ring	2	
308	Washer	2	
309	Bearing	4	
310	Loading Wheel	2	
311	Elastic Pin	1	
312	Elastic Pin	2	
313	Thrust Plate	1	
314	Retaining Ring	1	
315	Bearing	1	
316	Shaft of loading Wheel	1	
317	Nut	1	
318	Screw	1	
319	Lever Plate	1	
320	Elastic Pin	1	
321	Valve Cartridge	1	
322Y	Pump Body	1	Only for Type X Pump
323Y	Seal Washer	1	
324Y	Screw Plug	1	
325	Seal	1	
326	O – Ring	1	
327	Dust Ring	1	
328	Piston Rod	1	
329	Steel Ball	1	
330Y	Screw Plug	1	Only for Type X Pump
331Y	O - Ring	1	
332Y	Bolt	1	
333Y	Spring	1	

334Y	Spindle of Safety Valve	1	
335	Grease Cup	1	
336	Cylinder	1	
337	Cover of Bearing	1	
340Y	Cover with Screw	1	Only for Type X Pump
341Y	O - Ring	1	

## Type W Hydraulic Pump

No.	Description	Quantity	Remark
C01	Pump Piston	1	
C02	Spring Cap	1	
C03	Dust Ring	1	
C04	Seal	1	
C05	Spring	1	
C06	Screw	1	
C07	Seal	1	
C08	Spring	1	
C09	Spindle of Safety Valve	1	
C10	Valve body	1	
C11	O Ring	1	
C12	Ball	1	
C13	Elastic Pin	1	
C14	Cylinder	1	
C15	Screw	1	
C16	Nut	1	
C17	Lever Plate	1	
C18	Valve Cartridge	1	
C19	O-Ring	2	
C20	Spring	1	
C21	O-Ring	1	
C22	Oil plug	1	
C23	Seal Washer	1	
C24	O – Ring	1	
C25	Seal	1	
C26	Piston Rod	1	
C27	Dust Cover	2	
C28	Locking Ring	2	
C29	Washer	2	
C30	Loading Wheel	2	
C31	Bearing	4	
C32	Cover of Bearing	1	
C33	Bearing	1	

# Type W Hydraulic Pump





CARBO USA LLC  
1541 Prudential Dr  
Dallas, TX 75235  
Tel: 972.803.4040  
**carbousa.com**

CARBO is continually improving its products; therefore, specifications are subject to change without notice.  
Copyright© 2018 CARBO USA LLC